



**A Pay-It-Forward Café
Where Everyone is Welcome.**

Powered by our culinary apprentices.

Located at the Central Library of Rochester
115 South Avenue, Rochester, NY 14604

Monday - Friday 11am - 3pm

WINTER MENU

SIGNATURE SANDWICHES

After 2:30 pm all sandwiches are served cold

- Top Notch Tuna** (Pressed) **\$9.50**
Tuna, Banana Peppers, Tomatoes, Cheddar, Honey Mustard, Multigrain
- Fowl Language '24** (Pressed) **\$9.50**
Turkey, Cheddar, Lettuce, Tomato, Pickled Red Onion, Honey Mustard, Avocado Mash, Bacon, Sourdough
- Grilled Cheese** (Pressed) **\$5.50**
Cheddar, American, Sourdough or Multigrain
- PB&J** (Pressed or Cold) **\$3.25**
*Peanut Butter & Grape Jelly, Multigrain or Sourdough. **Add Bananas +25¢***
- School Lunch** (Cold) **\$5.50**
Turkey or Ham, American, Multigrain or Sourdough

SEASONAL SANDWICHES

- Catalonia** (Pressed) **\$9.00**
Roast Beef, Romesco, Provolone, Arugula, Multigrain
- CBLT** (Pressed) **\$9.00**
Grilled Chicken, Cheddar, Lettuce, Tomato, Bacon, Garlic Mayo, Multigrain
- Ol' Reliable** (Pressed) **\$9.00**
Roast Beef, Cheddar, Horsey Mayo, Caramelized Onions, Sourdough
- Anderson Crunch** (Pressed) **\$8.50**
Turkey, Cheddar, Avocado Mash, Sour Cream & Onion Chips, Sourdough
- Roasted Red (v)** (Cold) **\$7.50**
Roasted Red Pepper Hummus, Arugula, Tomato, Pickled Red Onion, Roasted Red Peppers, Cucumbers, Multigrain
- Classic** (Cold) **\$7.50**
Ham, Cheddar, Lettuce, Honey Mustard, Sourdough

FLATBREAD PIZZAS

- Cheese** **\$7.00**
Red Sauce, Mozzarella
- Pepperoni** **\$8.50**
Red Sauce, Mozzarella, Cup & Char Pepperoni
- Veggie Lover** **\$8.50**
Garlic Oil, Mozzarella, Tomatoes, Caramelized Onions, Banana Peppers, Roasted Red Peppers
- Philly Cheese** **\$9.50**
Garlic Oil, Mozzarella, Roast Beef, Peppers, Onions

SOUPS

- Signature Chicken Sausage and Kale Seasonal Special**
- Cup **\$3.25**
- Bowl **\$6.25**

SALADS

- Entrée Salad** **\$8.00**
Mixed Greens & Assorted Vegetables including Cucumber, Tomato
- Side Salad** **\$5.00**
Mixed Greens, Shredded Carrots, Cucumbers, Grape Tomatoes
- Add Protein:** Bacon, Ham, Hummus, Tuna, Cup & Char Pepperoni, Chicken, Turkey .. **\$1.50**

SIDES

- Signature Mac Salad** **\$4.00**
- Seasonal Special** **\$4.00**
- Chips** **\$2.00**
- Fruit** **\$1.00**

BAKERY

- Cookies** **\$2.00**
Chauncy's Chocolate Chip, Oatmeal Cranberry, Lemon White Chocolate
- Muffins** **\$3.25**
- Chocolate Hazelnut Croissant** **\$3.75**

DRINKS

- Coffee & Tea (Hot or Cold)**
- 12 oz **\$1.25**
- 16 oz **\$1.75**
- Hot Chocolate** **\$1.50**
- Bottled Water** **\$1.00**
- Juice Box** **\$1.00**
- Milk** **\$1.25**
- Soda (Variety)** **\$2.75**
- Seltzer (Flavors vary)** **\$2.50**

ALL PRICES INCLUDE TAX & DEPOSIT

CAN'T PAY WHAT'S ON THE MENU TODAY?

We offer a \$3 Community Meal:
Sandwich or Focaccia Pizza, Soup, or Side. Coffee, Tea (Hot or Cold), Milk, Juice Box or Bottled Water.

*No substitutions. Individual meals only.
No large groups.*

Contact Catering@FoodlinkNY.org for group and catering options.

If you have a food allergy, please notify us. Allergen information for menu items is available. Ask an employee for details.

ABOUT US



Fresh ingredients
purchased daily



Foodlink
Community Café



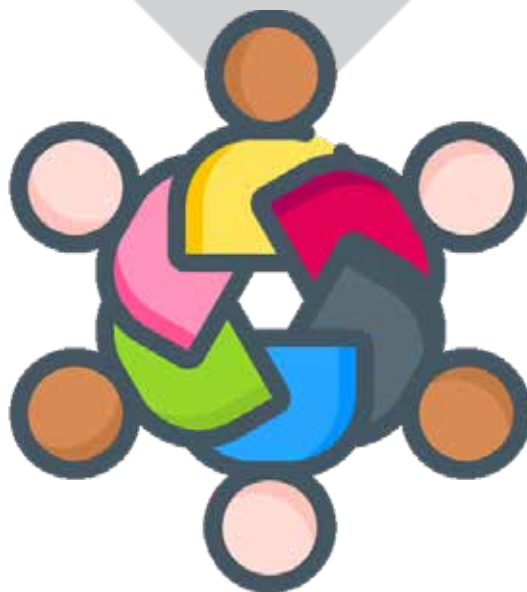
Pay it forward!
Customers support
those who are in need
of food assistance



Housemade food
prepared daily



Powered by our
culinary apprentices,
alumni, and volunteers



NOURISHING LIVES AND LAUNCHING CULINARY CAREERS!

Foodlink Community Café is a customer-facing training opportunity for culinary apprentices enrolled in the Foodlink Career Fellowship. We are a unique, pay-it-forward café where everyone is welcome!

Pay it forward. Generous donations enable us to offer a healthy, affordable Community Meal option for our customers in need of food support. 100% of all proceeds support Foodlink's

mission of ending hunger and building healthier communities.

Community Meal. For a minimum of \$3, customers can choose any sandwich or focaccia pizza, soup, or side and a drink — coffee, tea (hot or cold), milk, juice box or water. All patrons ordering a Community Meal must be present at the café. There is a limit of one meal per day. The Community Meal is not available for large groups.

For food assistance please call **2-1-1** (text 898-211) or visit [FoodlinkNY.org/findfood](https://www.foodlinkny.org/findfood) for a list of food resources in your area.

